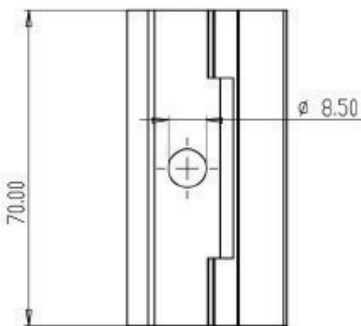
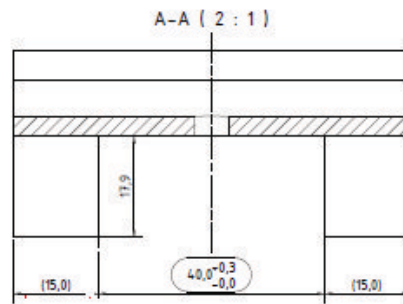
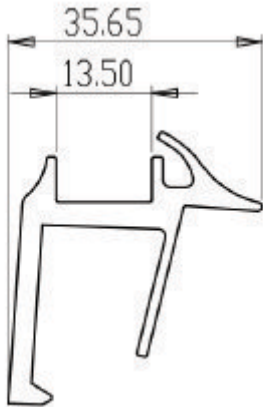




FB End clamp



MATERIAL
ALUMINUM



FASTENING
MATERIAL
**STAINLESS
STEEL SCREW**



SURFACE
**BLACK ELOX
ALUMINUM**



GROUNDING
**INTEGRATED
GROUNDING
SPIKE**



DESCRIPTION

The aluminum end clamp is used to attach solar panels to the mounting structure. The integrated spike ensures a conductive connection between the panel frame and the structure. The black anodized surface provides high corrosion resistance and an aesthetic appearance.

FEATURES

Low weight
High mechanical strength
Corrosion resistance
Suitable for indoor and outdoor use